



Levy to Move Seattle Update

Seattle Pedestrian Advisory Board

June 14, 2022

Serena Lehman, SDOT

The Levy to

MOVE SEATTLE



Seattle
Department of
Transportation

Key Takeaways

- Across Levy to Move Seattle programs, Levy dollars are supporting pedestrian safety
- Some significant deliverables include:
 - **24** major corridors improved with elements such as new crosswalks and crossing signals, new sidewalks, and improved ADA-accessible curb ramps
 - **131** new crosswalks & **1500+** annual crosswalks repainted to improve visibility of people crossing
 - **205** blocks of new sidewalks to connect to community spaces, transit, and more
 - **171** Safe Routes to School projects to make it safer to walk, bike, and roll to school
 - **39** stairways repaired/rehabilitated to connect Seattle's streets



Outline

- Levy Categories & Programs
- Levy programs supporting pedestrian infrastructure
- Snapshot of the Levy's impact on pedestrian safety and mobility
- Q1 2023 Levy Highlights



Reminder: Levy Categories



Provide safe and accessible routes connecting schools, transit hubs, and other destinations.



Reduce the backlog of maintenance and repair work along major arterials and the busiest Seattle streets.



Enhance transportation choices throughout the network

Levy to Move Seattle Programs

1 - Safety Corridors
2 - Safe Routes to School
3 - Markings
4 - Transportation Operations
5 - Bicycle Safety
6 - Sidewalk Safety Repair
7 - Curb Ramps & Crossings
8 - Neighborhood Street Fund
9 - Arterial Roadway Maintenance
10 - Paving Spot Improvements

11 - Bridge Spot Repairs
12 - Bridge Seismic
13 - Fairview Bridge
14 - Bridge Replacement, Planning & Design
15 - Stairway Maintenance
16 - Urban Forestry: Tree Trimming and Planting
17 - Drainage Partnership, SPU South Park
18 - Multimodal Improvements
19 - Traffic Signal Timing Improvements
20 - Intelligent Transportation System Improvements

21 - Transit Spot Improvements
22 - Light Rail Connections, Graham St
23 - Northgate Bridge
24 - Accessible Mt Baker
25 - New Sidewalks and Crossing Improvements
26 - SPU Partnership, Broadview
27 - Bike Parking & Bike Spot Improvements
28 - Partnership Improvements, Lander Overpass
29 - Heavy Haul Network, East Marginal Way
30 - Freight Spot Improvements



Levy to Move Seattle Programs

BOLD - Programs making notable pedestrian infrastructure improvements

- 1 - Safety Corridors
- 2 - Safe Routes to School
- 3 - Markings
- 4 - Transportation Operations
- 5 - Bicycle Safety
- 6 - Sidewalk Safety Repair
- 7 - Curb Ramps & Crossings
- 8 - Neighborhood Street Fund
- 9 - Arterial Roadway Maintenance
- 10 - Paving Spot Improvements

Some 2022 completed projects



New signalized crossing at 24th Ave E and E Lynn St in Montlake.



Remarking a crosswalk at 16th Ave SW and SW Findlay St.



New crossing near Ballard High School for students walking, rolling, and biking.



South Delridge Pedestrian Safety Enhancements project

Levy to Move Seattle Programs

BOLD - Programs making notable pedestrian infrastructure improvements

- 11 - Bridge Spot Repairs
- 12 - Bridge Seismic
- 13 - Fairview Bridge**
- 14 - Bridge Replacement, Planning & Design
- 15 - Stairway Maintenance**
- 16 - Urban Forestry: Tree Trimming and Planting
- 17 - Drainage Partnership, SPU South Park**
- 18 - Multimodal Improvements**
- 19 - Traffic Signal Timing Improvements
- 20 - Intelligent Transportation System Improvements

Some completed projects



Fairview Ave N Bridge



Northwest corner of 5th Ave S and S Portland St improved in South Park



Stairway repair at S Morgan St



Rebuilt sidewalks and ADA-accessible ramps; shown here are new ADA curb ramps at 5th Ave and Madison St as part of RapidRide G Line project.

Levy to Move Seattle Programs

BOLD - Programs making notable pedestrian infrastructure improvements

21 - Transit Spot Improvements

22 - Light Rail Connections, Graham St

23 - Northgate Bridge

24 - Accessible Mt Baker

25 - New Sidewalks and Crossing Improvements

26 - SPU Partnership, Broadview

27 - Bike Parking & Bike Spot Improvements

28 - Partnership Improvements, Lander Overpass

29 - Heavy Haul Network, East Marginal Way

30 - Freight Spot Improvements

Some completed projects



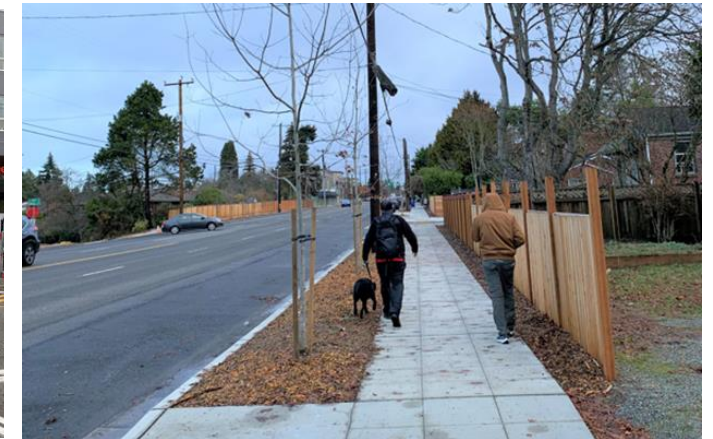
Tree pit on 5th Ave filled for bus passenger comfort and safety



John Lewis Memorial Bridge



Crossing improvement at Interlake Ave N and N 45th St.



New sidewalks on Greenwood Ave N

Levy to Move Seattle (2016-2024)

Total Investment and Levy funding in programs making notable pedestrian infrastructure improvements

Move Seattle Levy Program	Total Investment	Levy Funding
01. Safety Corridors	\$59.1M	\$23.4M
02. Safe Routes to School	\$41.5M	\$5.6M
03. Markings	\$16.1M	\$6.4M
04. Transportation Operations	\$96.1M	\$45.5M
06. Sidewalk Safety Repair	\$37.8M	\$23.1M
07. Curb Ramps & Crossings	\$83.5M	\$48.7M
08. Neighborhood Street Fund	\$28.1M	\$25.7M
13. Bridge Replacement, Fairview	\$52.4M	\$14.7M
15. Stairway Maintenance	\$11.9M	\$4.4M
17. Drainage Partnership, SPU South Park	\$10.0M	\$10.0M
18. Multimodal Improvements	\$465.9M	\$111.3M
21. Transit Spot Improvements	\$63.7M	\$22.1M
23. Northgate Bridge	\$53.8M	\$26.7M
25. New Sidewalks	\$126.5M	\$62.5M
26. SPU Broadview	\$8.6M	\$7.2M
28. Partnership Improvements, Lander Overpass	\$62.2M	\$4.3M
Grand Total	\$1,217.2M	\$441.5M

- \$441.5 million in Levy funding alone
- Leveraged with grant & local funding for a total of \$1.2 billion in investment thanks to the Levy

Snapshot: The Levy's impact on pedestrian safety and mobility 2016-2022

- **24** major corridors improved with elements such as new crosswalks and crossing signals, new sidewalks, and improved ADA-accessible curb ramps
 - For example, after redesign of section of NE 65th: fewer collisions and injuries and no fatal or severe injury collisions in 2019; people drove slower; more people walking and riding bikes
- **131** new crosswalks
- **22** new traffic signals to improve safety at busy intersections
- **1500+** annual crosswalks repainted to improve visibility of people crossing
- **205** blocks of new sidewalks to build our pedestrian network and connect to transit and community destinations
- **191** blocks of sidewalks repaired to improve safety and accessibility
- **171** Safe Routes to School projects to make it safer to walk, bike, and roll to school
- **39** stairways repaired/rehabilitated to connect Seattle's streets
- **3** new bridges created to improve access to transit, safety near rail crossings, and connect neighborhoods across modes *(one pedestrian/bicycle bridge, and two with pedestrian/transit/bicycle/vehicle infrastructure)*

Highlights across the Levy from Q1 2023



Safe Routes

- Planning, design, and early implementation of safety corridor projects on **4th Ave S, 1st Ave S, Rainier Ave S, Seward Park Ave S, and downtown**; includes Vision Zero momentum-building action, installing **No Turn on Red signs**
- Installed one project near **Ingraham High School** and another near **Stevens Elementary School**
- Made **two traffic spot improvements** including a new guard rail on Baker Ave NW south of NW 53rd St and a new crosswalk with signage on 62nd Ave NE, south of NE 74th St.

Top: No Turn on Red sign downtown.

Bottom: New curb ramps near Stevens Elementary School.



Safe Routes

- Continued construction on **Melrose Ave E neighborhood greenway and protected bike lanes**
- **Completed 2,188 sidewalk spot repairs** across 100 different blocks in Seattle, ~18,000 square feet
- Continued construction 51st Ave S and Renton Ave S Traffic Safety Enhancements and Andover and Dakota Pedestrian Safety Enhancements (**NSF projects**); prepared for construction on multiple other NSF projects



Top: Before and after sidewalk repair on California Ave SW and SW Brandon St

Bottom: Constructing curb ramps as part of the Andover and Dakota NSF project.



Maintenance and Repair

- Continued **design of paving projects on 11th Ave NE/12th Ave NE and 15th Ave NW**, and incorporated safety improvements
- **Repaired concrete** on 3rd Ave between Stewart St & Virginia St.
- Made progress on **rebuilding stairways** at Princeton Ave NE, S Morgan St, and California Dr SW
- Completed **103 more bridge spot repairs**



Before and after repaving on 3rd Ave between Stewart St & Virginia St.

Maintenance and Repair

- Continued work leading to bidding and construction of Admiral Way N, Admiral Way S, McGraw St Bridge, and 15th Ave NE/NE 105th St Bridge **seismic reinforcement projects**
- **Planted 222 new trees** - including along 35th Ave SW, Sand Point Way NE, and Martin Luther King Jr. Way S
- Continued paving and prepared to install landscaping in South Park as part of SPU Drainage Partnership (project now complete)



One of over 220 new trees planted in Q1 2023.

Congestion Relief

- Continued construction on **Madison RapidRide G Line, Route 7 and Route 44 projects**, made progress on the design of **RapidRide J Line, Route 40, and Route 48 projects**, and analyzed results from first phase of community engagement in the **Aurora Planning Study**
- Completed **55 traffic signal diagnostic evaluations**, (inspect the signal components), and 180 preventative maintenance projects (detect potential problems and make repairs)
- Completed **11 transit spot improvements** including nine new bus zones and new benches at 12th Ave NE and NE 61st St, and S Myrtle Pl and S Holly Park



*Top: Bench at S Myrtle Pl
and S Holly Park.*



*Bottom: Work occurring
at the intersection of
Madison St and 12th Ave
as part of Madison
RapidRide G Line project*

Congestion Relief

- Completed **over 11 blocks of new sidewalks** including on S Rose St and 24th Ave SW, completed a stairway at S Henderson St, and continued construction on sidewalks on NE 117th St and NW 132nd St.
- Finalized necessary permitting and approvals for the **second phase of sidewalks on Greenwood Ave N** from N 125th St to N 130th St and **the neighborhood greenway** on 1st Ave NW
- **Awarded the construction contract** for north segment of **East Marginal Way**, and contractor is preparing to order key specialized materials in spring 2023
- Removed a section of unused railroad tracks on East Marginal Way in partnership with WSDOT, which is repaving the area as part of an effort to **improve freight mobility**



New stairway at S Henderson St.

Questions?



From the entire SDOT Team:

Thank you!

